

# OPERATOR'S SAFETY AND SERVICE MANUAL



## WIZARD SCREED

This manual covers the following serial numbers  
and higher for each model listed:

WS35H.1.....2020000



## WET SCREED

### **MBW Europe Ltd.**

Units 2&3 Cochrane Street

Bolton BL3 6BN

England, UK

Phone: +44 (0) 1204 387784

Fax: +44 (0) 1204 387797

E-mail: [saleseurope@mbw.com](mailto:saleseurope@mbw.com)

Website: [mbweurope.com](http://mbweurope.com)

©MBWEurope

2021

Printed in the UK

**THIS PAGE IS  
INTENTIONALLY  
LEFT BLANK**

# TABLE OF CONTENTS

---

<b>SAFETY INFORMATION</b>	<b>1</b>	<b>SPECIFICATIONS</b>	<b>7-9</b>
Safety Precautions		Technical Data	
		Sheet Parts	
<b>OPERATION</b>	<b>2-3</b>		
Operation Principal			
Starting Procedure (Warm)		<b>WARRANTY</b>	<b>10</b>
Starting Procedure (Cold)			
Stopping Procedure			
Operation		<b>CE CERTIFICATE</b>	<b>11</b>
Lubrication			
<b>MAINTENANCE</b>	<b>4</b>		
<b>LABELS</b>	<b>5</b>		

# SAFETY INFORMATION

## Introduction



This Safety Alert Symbol is used to call attention to items or operations which may be dangerous to those operating or working with this equipment. The symbol can be found throughout this manual and on the unit. Please read these warnings and cautions, along with all decals, carefully before attempting to operate the unit. Make sure every individual who operates or works with this equipment is familiar with all safety precautions.

### **WARNING**

**GENERAL WARNING.** Indicates information important to the proper operation of the equipment. Failure to observe may result in damage to the equipment and/or severe bodily injury or death.

### **CAUTION**

**GENERAL CAUTION.** Indicates information important to the proper operation of the equipment. Failure to observe may result in damage to the equipment.

## Safety Precautions



**LETHAL EXHAUST GAS:** An internal combustion engine discharges carbon monoxide, a poisonous, odorless, invisible gas. Death or serious illness may result if inhaled. Operate only in a properly ventilated area. **NEVER OPERATE IN A CONFINED AREA!**



**DANGEROUS FUELS:** Use extreme caution when storing, handling and using fuels as they are highly volatile and explosive in vapor state. Do not add fuel while engine is running. Stop and cool the engine before adding fuel. **DO NOT SMOKE!**



**SAFETY GUARDS:** It is the owner's responsibility to ensure that all guards and shields are in place and in working order.



**IGNITION SYSTEMS:** Breakerless, magneto, and battery ignition systems can cause severe electrical shocks. Avoid contacting these units or their wiring.



**SAFE DRESS:** Do not wear loose clothing, rings, wristwatches, etc. near machinery.



**NOISE PROTECTION:** Wear OSHA specified hearing protection devices.

**EYE PROTECTION:** Wear OSHA specified eye shields, safety glasses, and sweat bands.



**FOOT PROTECTION:** Wear OSHA specified steel-tipped safety shoes.

**HEAD PROTECTION:** Wear OSHA specified safety helmets.



**OPERATOR:** Keep children and bystanders off and away from the equipment.



**DUST PROTECTION:** Machining, crushing or handling of stone, concrete, masonry, metal and other materials may generate dust, mist and fumes containing chemicals such as silica

known to cause serious or fatal injury or illness such as respiratory disease, silicosis, cancer, birth defects, or other reproductive harm.

- Control dust, mist and fumes at the source where possible. Water should be used to control dust whenever feasible.
- Use good work practices and follow the recommendations of the manufacture, OSHA/NIOSH and other occupational trade associations.
- When hazards cannot be eliminated the operator and any bystanders should always wear a OSHA specified respirator for materials being handled.

**REFERENCES:** For details on safety rules and regulations in the United States, contact your local Occupational Safety and Health Administration (OSHA) office. Equipment operated in other countries must be operated and serviced in accordance and compliance with any and all safety requirements of that country. The publication of these safety precautions is done for your information. MBW does not, by the publication of these precautions, imply or in any way represent that these are the sum of all dangers present near MBW equipment. If you are operating MBW equipment, it is your responsibility to insure that such operation is in full accordance with all applicable safety requirements and codes. All requirements of the United States Federal Occupational Safety and Health Administration Act must be met when operated in areas that are under the jurisdiction of that United States Department.

## Safety Decals

Carefully read and follow all safety decals. Keep them in good condition. If decals become damaged, replace as required. If repainting the unit, replace all decals. Decals are available from authorized MBW distributors. Order the decal set listed on the following page.

# OPERATION

---

## Operating Principal

An eccentric weight mounted on the exciter shaft contained within the vibration housing is driven at high speed by a clutch drive system. This high speed shaft revolution causes the rapid vibratory motion of the blade as well as imparting a forward motion.

The screed is designed to run at an engine speed (engine take off shaft) of 3600 rpm.

(normally considered full throttle). Running the engine at lower rpm's will result in a decrease of consolidation force and lower travel speed. It will create excessive "out of synch" vibrations resulting in poor consolidation, maneuverability, excessive wear to the machine, and discomfort to the operator.

## Starting Procedure (Warm Climate)

Open fuel valve on petrol tank. Set throttle lever to idle position, set choke to closed position, start engine. Open choke slightly to prevent flooding. Move throttle to "Open" or "Run" position when engine is warm, increase throttle to maximum operation position (3600 rpm).

## Starting Procedure (Cold Climate)

Follow same procedure as above but allow longer warm up period - 3 to 5 minutes. Set choke to open position, start engine. Once engine is running move choke to closed position. In cold weather, oil is much heavier to move and requires more time to work its way into the moving parts. If maximum power is not attained, allow further warm up time. Fill fuel tank with clean petrol, use safety approved petrol containers. DO NOT MIX OIL WITH PETROL - USE UNLEADED PETROL ONLY.

## Stopping Procedure

- Throttle engine down.
- Depress or turn off stop switch.

## Operation

- On level surfaces the screed moves forward or backward depending on the tilt of the handle. On uneven surfaces or inclines, light forward pressure on handle may be required to assist the screed in moving. Lean the handle up or away from you to make the screed travel toward you (i.e. forward). Lean the handle down or toward you to make the screed travel away from you (i.e. backward).
- ALWAYS OPERATE THE MACHINE AT FULL THROTTLE. If excessive vibration is felt through the handle, do not operate until the engine is checked and set at its maximum running speed of 3600 rpm.
- The handle has four (4) adjustment clamps to allow the operator to use the screed more comfortably. Ensure that the screws of all of these clamps are tightened to securely hold the handle sections rigidly. A loose clamp will cause that section to rotate and or slide away from the desired position.

## Lubrication

- ENGINE OIL: Always check engine oil before starting and at regular intervals thereafter. Use 10W30 engine oil as recommended. Keep engine oil clean, change accordingly. Fill crankcase to levels as recommended in manufacturer's engine manual.

# MAINTENANCE



## WARNING



Always exercise the stopping procedure before servicing or lubricating the unit.

After servicing the unit, replace and fasten all guards, shields, and covers to their original positions before resuming operation.



## CAUTION



Always verify fluid levels and check for leaks after changing fluids.

Do not drain oil onto ground, into open streams, or down sewage drains.

## Maintenance Schedule

SYSTEM	MAINTENANCE	EACH USE	EVERY 20 HOURS	EVERY 100 HOURS	YEARLY
Engine	Refer to engine operator/owner manual	X			
Hardware	Check and tighten as needed <sup>1</sup>		X		X
Shockmounts	Check for cracks or tears		X		X

1. Check all hardware after the first 5 hours of use, then follow the maintenance schedule.

## Engine Maintenance

Refer to the engine owner's manual for maintenance intervals and procedures.

## Cleaning


Clean any concrete from the Wizard Screed immediately after each use. DO NOT allow concrete to harden on the screed.

1. Use a hose to remove any excess concrete.
2. Remove any buildup with hard plastic bristle brush.

**NOTE: DO NOT use a wire brush, hammer, or pressure washer to remove concrete from the main unit or float blade.**

3. Remove the blade.
4. Start engine and run the exciter for about 10 seconds.
5. Shut down the engine.

# LABELS

SAFETY PRECAUTIONS	
	<p> <b>DANGER</b></p> <p><b>EXPLOSION HAZARD</b> Never operate the machine in an explosive atmosphere, near combustible materials or where ventilation does not clear exhaust fumes.</p>
	<p><b>WARNING</b></p> <p><b>BURN HAZARD</b> Never come into contact with the engine or muffler when engine is operating or shortly after it is turned off. Serious burns may occur.</p>
	<p> <b>CAUTION</b></p> <p><b>ROTATING HAZARD</b> Never place hands or feet inside safety guard rings. Serious injury will result from contact with rotating blades.</p>
	<p> <b>CAUTION</b></p> <p><b>MOVING PARTS</b> Before starting the machine ensure that all guards and safety devices are in place and functioning properly.</p>
	<p> <b>ATTENTION</b></p> <p><b>READ OWNERS MANUAL</b> Read and understand operator's manual before using this machine. Failure to follow operating instructions could result in serious injury or death.</p>



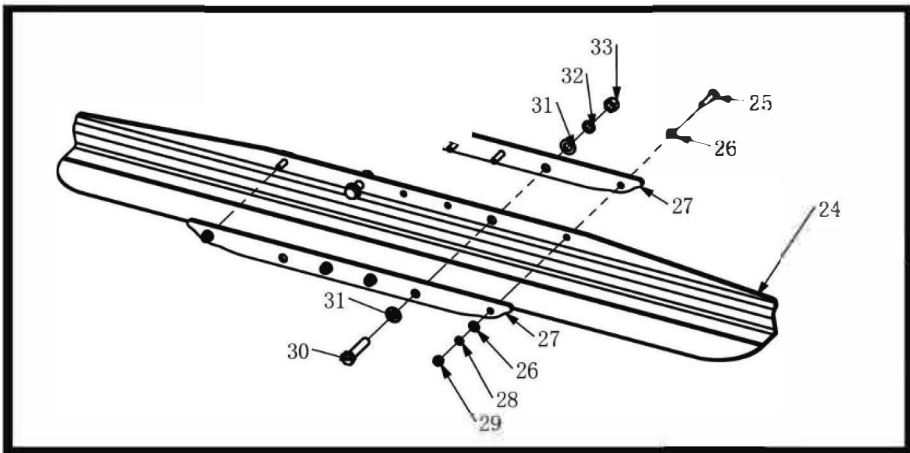
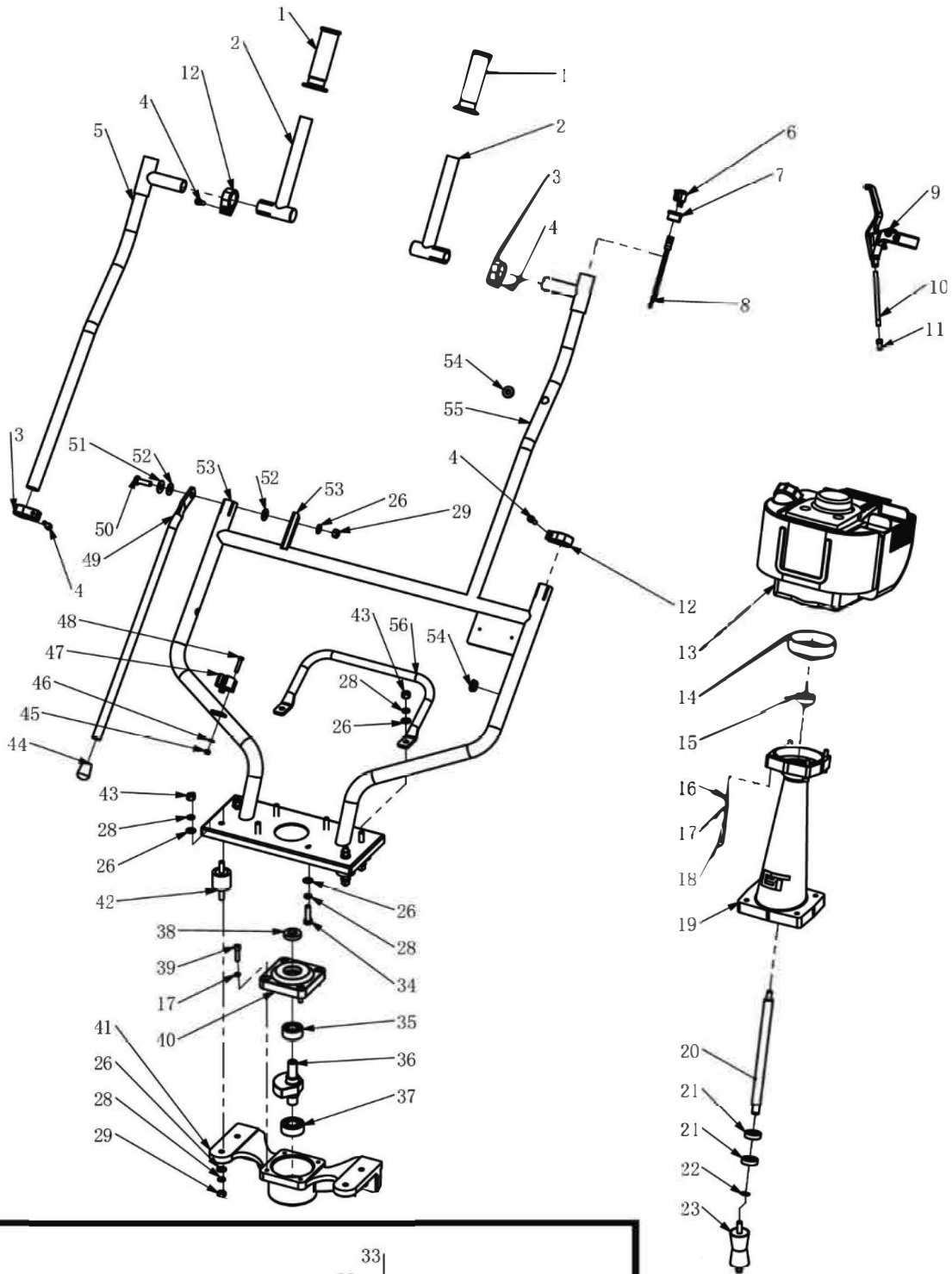
# SPECIFICATIONS

## Technical Data Sheet

<b>MODEL</b>	<b>WS35H.1</b>
<b>ENGINE</b>	HONDA GX35 1.3 HP 4-STROKE
<b>WEIGHT (WITHOUT BLADE)</b>	12.7 KG
<b>SOUND POWER</b>	50 dBA
<b>VIBRATION (HANDLE)</b>	< 9 M/S SQ

<b>BLADE</b>			
<b>CODE</b>	<b>SIZE (M)</b>	<b>SIZE (FT)</b>	<b>WEIGHT</b>
WSBLADE6	1.8 M	6 FT	4.4 KG
WSBLADE8	2.4 M	8 FT	5.8 KG
WSBLADE10	3.0 M	10 FT	7.3 KG
WSBLADE12	3.7 M	12 FT	8.7 KG
WSBLADE4.2	4.2 M	14 FT	10.2 KG
WSBLADE4.8	4.8 M	16 FT	11.6 KG

# PARTS



# PARTS

WIZARD SCREED WS35.1			
No.	Description	Product Code	Qty
1	HANDLE GRIP	WS/ES300101	2
2	HANDLE GRIP SECTION	WS/2602-00018-4	2
3	HANDLE CLAMP, LEFT	WS/2602-00045-4	2
4	ALLEN SCREW M6	WS/16062003	4
5	HANDLE SECTION, RIGHT	WS/2602-00017-4	1
6	ON/OFF SWITCH	WS/ES300104	1
7	SWITCH BUSHING	WS/ES300105	1
8	WIRE, ON/OFF SWITCH	WS/2602-09000-1	1
9	THROTTLE LEVER	WS/ES300103	1
10	THROTTLE CABLE	WS/ES300102	1
11	NUT M6	WS/2204-15002-4	1
12	HANDLE CLAMP, RIGHT	WS/2602-00046-4	2
13	HONDA GX35 ENGINE	WS/25000018	1
14	CLUTCH DRUM	WS/ES300112	1
15	BEARING, CLUTCH DRUM	WS/ES300111	1
16	WASHER M6	WS/11060000	4
17	SPRING WASHER M6	WS/12060000	8
18	ALLEN SCREW M6	WS/16063503	4
19	DRIVE HOUSING	WS/2602-00025-1	1
20	DRIVE SHAFT	WS/ES300110	1
21	BEARING, LOWER DRIVE SHAFT	WS/ES300109	2
22	CIRCLIP	WS/ES300108	1
23	DRIVE MOUNT (M8 THREAD)	WS/ES300107	1
24	BLADE	WSBLADE (& length)	1
25	BOLT M8	WS/15080350	4
26	WASHER M8	WS/11080000	21
27	BLADE FLANGE	WS/2602-00036-2	2
28	SPRING WASHER M8	WS/12080000	16
29	LOCK NUT M8	WS/13080001	9
30	BOLT M12X55	WS/15120550	2
31	WASHER M12	WS/11120000	4
32	SPRING WASHER M12	WS/12120000	2
33	LOCK NUT M12	WS/13120001	2
34	BOLT M8	WS/15080300	4
35	BEARING, UPPER EXCITER	WS/215202-2R	1
36	EXCITER WEIGHT	WS/2602-00030-4	1
37	BEARING, LOWER EXCITER	WS/2162203-2R	1
38	OIL SEAL, EXCITER	WS/2515300702	1
39	ALLEN SCREW M6	WS/16062503	4
40	EXCITER COVER	WS/2602-00027-1	1
41	EXCITER HOUSING	WS/2602-00004-1	1

# PARTS

42	SHOCK MOUNT, EXCITER	WS/ES300106	4
43	NUT M8	WS/13080000	4
44	KICK STAND RUBBER CAP	WS/2602-00028-4	1
45	LOCK NUT M5	WS/13050001	2
46	WASHER M5	WS/11050000	2
47	CLAMP	WS/ES300100	1
48	BOLT M5	WS/16052501	2
49	KICK STAND	WS/2602-00005-4	1
50	BOLT M8	WS/15080250	1
51	WASHER M8	WS/11082202	1
52	NYLON WASHER	WS/2602-00034-4	2
53	HANDLE BASE	WS/2602-02000-4	1
54	WIRE HOLDER	WS/2602-00032-4	2
55	HANDLE SECTION, LEFT	WS/2602-00006-4	1
56	CARRY HANDLE	WS/2602-00003-1	1

# WARRANTY

**WHAT DOES THIS WARRANTY COVER?** MBW warrants each New Machine against defects in material and workmanship for a period of twelve (12) months. "New Machine" means a machine shipped directly from MBW or authorized MBW dealer to the end user. This warranty commences on the first day the machine is sold, assigned to a rental fleet, or otherwise put to first use.

MBW warrants each Demonstration Machine against defects in material and workmanship for a period of six (6) months. "Demonstration Machine" means a machine used by MBW or its agents for promotional purposes. This warranty commences on the first day the machine is sold, assigned to a rental fleet, or otherwise put to first use.

This warranty covers the labor cost for replacement or repair of parts, components, or equipment on New Machines or Demonstration Machines, and MBW shall pay labor costs at MBW's prevailing rate to affect the warranted repair or replacement. MBW reserves the right to adjust labor claims on a claim-by-claim basis.

This warranty covers the shipping cost of replacement parts, components, or equipment via common ground carriers from MBW to an authorized MBW dealer. Air freight is considered only in cases where ground transportation is not practical.

**MAY THIS WARRANTY BE TRANSFERRED?** This warranty is non-transferable and only applies to the original end user of a new machine or demonstration machine.

## WHAT DOES THIS WARRANTY NOT COVER?

1. This warranty does not cover any Used Equipment. "Used Equipment" means any MBW machine or equipment that is not a New Machine or a Demonstration Machine. All Used Equipment is sold **AS IS/WHERE IS WITH ALL FAULTS**.

2. This warranty does not cover any New Machine, Demonstration Machine, or their equipment, parts, or components altered or modified in any way without MBW's prior written consent. This warranty does not cover the use of parts not specifically approved by MBW for use on MBW products. This warranty does not cover misuse, neglect, shipping damage, accidents, acts of God, the operation of any New Machine or Demonstration Machine in any way other than recommended by MBW in accordance with its specifications, or any other circumstances beyond MBW's control. This warranty does not cover any New Machine or Demonstration Machine repaired by anyone other than MBW factory branches or authorized MBW distributors.

3. This warranty does not cover, and MBW affirmatively disclaims, liability for any damage or injury resulting directly or indirectly from design, materials, or operation of a New Machine or Demonstration Machine or any other MBW product. MBW's liability with respect to any breach of warranty shall be limited to the provisions of this document and in no event shall exceed an amount equal to the purchase price of the New Machine or Demonstration Machine purchased from MBW.

4. This warranty does not cover engines, motors, and other assemblies or components produced by other manufacturers and used on a New Machine or Demonstration Machine, as said engines, motors, and other assemblies or components may have warranties provided by the manufacturer thereof. This warranty does not apply to consumable items, such as v-belts, filters, trowel and screed blades, seals, shock mounts, batteries, and the like, all of which are sold **AS IS/WHERE IS WITH ALL FAULTS**.

5. This warranty does not cover the cost of transportation and other expenses which may be connected with warranty service but not specifically mentioned herein.

6. This warranty does not cover any updates to any New Machine, Demonstration Machine, or any other MBW product. MBW reserves the right to improve or make product changes without incurring any obligation to update, refit, or install the same on New Machines or Demonstration Machines previously sold.

**WHAT WILL MBW DO?** MBW's obligation under this warranty is limited to the replacement or repair of parts for a New Machine or Demonstration Machine at MBW factory branches or at authorized MBW distributors, and such replacement or repair is the exclusive remedy provided hereunder. Labor must be performed at an authorized MBW distributor. MBW reserves the right to inspect and render a final decision on each warranty case, and MBW's repair or replacement is solely within the discretion of MBW.

**IT IS EXPRESSLY AGREED THAT THIS SHALL BE THE SOLE AND EXCLUSIVE REMEDY UNDER THIS WARRANTY. UNDER NO CIRCUMSTANCES SHALL MBW BE LIABLE FOR ANY COSTS, LOSS, EXPENSE, DAMAGES, SPECIAL DAMAGES, INCIDENTAL DAMAGES, OR PUNITIVE DAMAGES ARISING DIRECTLY OR INDIRECTLY FROM THE USE OF THE NEW MACHINE OR DEMONSTRATION MACHINE WHETHER BASED UPON WARRANTY, CONTRACT, NEGLIGENCE, STRICT LIABILITY, OR ANY OTHER LEGAL THEORY.**

**THE FOREGOING WARRANTY IS EXPRESSLY IN LIEU OF ALL OTHER WARRANTIES, EXPRESS OR IMPLIED, INCLUDING THE WARRANTIES OF MERCHANTABILITY, FITNESS FOR USE, AND FITNESS FOR A PARTICULAR PURPOSE, AND ALL OTHER OBLIGATIONS OR LIABILITY ON MBW'S PART. MBW NEITHER ASSUMES NOR AUTHORIZES ANY OTHER PERSON TO ASSUME ON BEHALF OF MBW ANY OTHER LIABILITY OR WARRANTY IN CONNECTION WITH THE SALE OR SERVICE OF ANY NEW MACHINE, DEMONSTRATION MACHINE, OR ANY OTHER MBW PRODUCT.**

# MBW EUROPE LTD

Compaction and Concrete Construction Equipment

Units 2 & 3 Cochrane Street, Bolton, BL3 6BN, UK

+44 (0)1204 387784

saleseurope@mbw.com

www.mbweurope.com



@mbweuropeLtd  
@MBWEuropeLtd  
MBW Europe LTD

## EC Declaration Of Conformity

We : **MBW Europe Limited**

Of : **Units 2 & 3 Cochrane Street, Bolton BL3 6BN United Kingdom**

Hereby declare under sole responsibility that :

Product : **MBW Wizard Screed**  
Model : **WS35H / WS25H.1**  
Serial number(s) : **WS35H: 190000- 199999      WS35H.1: 202000 and onwards**

Is in conformity with the applicable requirements of the following harmonized standards

**2006/42/EC Machinery Directive**

**2000/14/EC Noise Directive**

**2001/95/EC General Product Safety Directive**

**2002/95/EC Reduction of Hazardous Waste Directive LVD**

**2014/35/EU Low Voltage Directive**

**2004/30/EU Electromagnetic Compatibility**

The undersigned declares, on behalf of MBW Europe Limited that the equipment named above has been designed to comply with the relevant sections of the above referenced specifications.

**EN 349.2008:A1:2008 EN 12100:2010 EN12649:2008+A1:2011 EN ISO 5349-2:2001  
+A1:2015**

The unit complies with all the applicable essential Health and Safety Requirements of the directive.

Name : **Greig Sandiford**

Position : **Managing Director**

Date : **01/01/2021**

Signature :



## ABOUT MBW



*The story began when two men with extensive experience in mechanical vibration and soil compaction started a business in an unheated contractor's shed in the winter of 1967 in Slinger, Wisconsin USA*

*From these humble beginnings, we have broadened our product line to include a variety of compaction and concrete construction equipment along with quick customer support and service.*

*MBW is not a copyist – we do not duplicate designs developed by others. MBW begins each new engineering project with the assumption that significant progress can be made in terms of improved productivity, reduced maintenance, longer life, enhanced user safety or lower long-term cost of ownership.*

*Often, MBW's R&D efforts result in entirely fresh approaches to solving industry problems. Many of our products have pushed the productivity envelope to new heights. Some MBW products afford their operators the industry's safest tools in a given product class. Most MBW products solve long standing maintenance issues and extend product life expectations. Our goal is to provide equipment users with products of significant, tangible, comparative value... reasons to invest in MBW products.*



## CONTACTS

### **Greig Sandiford**

Managing Director

[mbwuk@mbw.com](mailto:mbwuk@mbw.com) • +44 (0)1204 387784

### **Andy Corless**

Operations Manager

[andyc@mbwuk.co.uk](mailto:andyc@mbwuk.co.uk) • +44 (0)1204 387784

### **John Mckale**

Sales Manager

[johnm@mbwuk.co.uk](mailto:johnm@mbwuk.co.uk) • 07770 933033

### **Ryan Ashcroft**

Internal Sales

[ryana@mbw.com](mailto:ryana@mbw.com) • 07917 171439

### **Sales Office**

All enquiries

[ukoffice@mbw.com](mailto:ukoffice@mbw.com) • +44 (0)1204 387784

### **Parts/Service/Warranty**

[ukoffice@mbw.com](mailto:ukoffice@mbw.com) • +44 (0)1204 387784

### **Accounts**

[ukoffice@mbw.com](mailto:ukoffice@mbw.com) • +44 (0)1204 387784

### **Marketing**

[jadea@mbw.com](mailto:jadea@mbw.com) • +44 (0)1204 387784

MBW EUROPE LTD

UNITS 2 & 3 COCHRANE STREET, BOLTON, BL3 6BN

• ALL ENQUIRIES: + 44 (0)1204 387784

E-MAIL: [SALESEUROPE@MBW.COM](mailto:SALESEUROPE@MBW.COM) • WEB SITE: [MBWEUROPE.COM](http://MBWEUROPE.COM)

