

ABOUT MBW INC.

Since 1967, MBW has been manufacturing one of the construction industry's most interesting lines of compaction, concrete and related equipment.

WHAT MAKES THE MBW LINE INTERESTING?

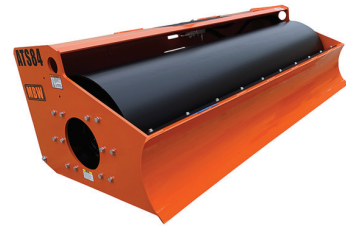
MBW is not a copyist - we do not duplicate designs developed by others. MBW begins each new engineering project with the assumption that significant progress can be made in terms of improved productivity, reduced maintenance, longer life, enhanced user safety and lower long-term cost of ownership. Often, MBW's R&D efforts result in entirely fresh approaches to solving industry problems. Many of our products have pushed the productivity envelope to new heights. Some MBW products afford their operators the industry's safest tools in a given product class. Most MBW products solve long standing maintenance issues and extend product life expectations. Our goal is to provide equipment users with products of significant, tangible, comparative value . . . reasons to invest in MBW products.



SCREEDS



TROWELS



ROLLER ATTACHMENTS



RAMMERS



VIBRATORY PLATES

MBW

SCREEDEMON™



AUTHORIZED DISTRIBUTOR

MBW



Copyright© 2023 MBW Incorporated All Rights Reserved

L17167 7/23

MBW Inc.
250 Hartford Road • P.O. Box 440
Slinger, Wisconsin • 53086-0440 • USA
Ph: 800-678-5237 or 262-644-5234 • Fax: 262-644-5169
E-mail: mbw@mbw.com • Website: www.mbw.com

MBW Europe Ltd.
Units 2 & 3 Cochrane Street • Bolton BL3 6BN • England UK
Ph: 44 (0) 1204 387784 • Fax: 44 (0) 1204 387797
E-mail: mbwuk@mbw.com or mbweurope@mbw.com
Website: www.mbw.com • Europe Website: www.mbw-europe.com

QUALITY ENGINEERED. QUALITY BUILT. QUALITY SURVIVES.

MBW.COM

SCREEDEMON

BACKGROUND

When MBW develops a new product, we look for deficiencies in products already in the marketplace. Portable wet screeds suffered 3 serious shortcomings:

MECHANICAL

Wet screeds were prone to high maintenance, especially in drive mechanisms between the engine and exciter. The ScreeDemon employs a simple, durable, low cost rubber isolator to drive the eccentric.

FUNCTIONAL

Most screed and screed bar combinations produce irregular vibration along the length of the screed bar. Not only is the concrete exposed to highly variable levels of vibration, but cream levels vary from spot to spot along the screed bar. The back-to-back triangular construction of the ScreeDemon bar is extremely rigid and minimizes variability in the transmission of vibration.

Most screeds bolt to their screed bars. Hardware threads are compromised by the concrete and assembling or removing the screed becomes such a problem that crews often don't disassemble for cleaning or transport. The ScreeDemon simply clamps to the specially designed bar. No holes to weaken the screed bar. No threads to complicate assembly/disassembly. The ScreeDemon goes together and comes apart in seconds.

OPERATOR HEALTH & SAFETY

All wet screeds tested by MBW exposed operators to excessive hand/arm vibration. The ScreeDemon's patented mount retention method enables use of low durometer isolators without loss of operator control. Hand/arm vibration is 50 to 90% lower than competitive screeds.

US & International Patents

SCREEDEMON HAND/ARM TEST

FINAL RESULT: 5-7 m/s²

- 4-1/2" Slump
- Normal Operating Speed
- 12' Screed Bar
- Test Instrumentation: Castle GA2003 HARM® Vibration Meter



MODEL	WS500
Operating Weight	29 lb (13.2 kg)
Engine	Honda GX35
Max Rated Power	1.5 hp (1.12 kW) @7000 rpm
Displacement	2.1 in ³ (35 cm ³)
Fuel Tank Capacity	0.17 gal (0.64 L)

Bar Specifications

BARS	WIDTH	WEIGHT
17804	4 ft (1.22 m)	8.1 lb (3.7 kg)
17806	6 ft (1.83 m)	12.1 lb (5.5 kg)
17808	8 ft (2.44 m)	16.1 lb (7.3 kg)
17810	10 ft (3.05 m)	20.1 lb (9.1 kg)
17812	12 ft (3.66 m)	24.0 lb (10.9 kg)
17814	14 ft (4.27 m)	28.0 lb (12.7 kg)
17816	16 ft (4.88 m)	32.0 lb (14.5 kg)
17818*	18 ft (5.49 m)	36.0 lb (16.3 kg)

*18 ft bars require two ScreeDemon power units.
() Metric Measurements, Specifications subject to change without notice.



EXTRA RIGID, DOUBLE TRIANGULAR, MAGNESIUM SCREED BAR

- minimizes variability in vibration
- clamps to ScreeDemon—no holes or hardware through bar
- is attached or removed from screed in seconds for cleaning/transport
- allows for offsetting of screed for working under protrusions

SCREEDEMON

SCREEDEMON® FEATURES

VARIABLE THROTTLE

allows instant response to concrete conditions

MAIN HANDLE

Walk-in design allows easy access to lifting points, Tool-free adjustment, Folds for easy transport and storage

CENTRAL LIFTING POINT

is perfectly balanced with any length screed bar

4-STROKE ENGINE

Honda GX35

PATENTED

Dual level, anti-vibration system. Unique system reduces vibration transmitted to the operator yet allows complete control of the unit.

HIGH STRENGTH

cast aluminum frame with a total power unit weight of 29 lbs.

CLAMPING MECHANISM

allows quick and easy attachment and has captured hardware

SEALED EXCITER

with oversized bearings requires no maintenance

MAGNESIUM SCREED BAR

Lightweight. No cut-out or attached hardware. Easy cleanup. Available in 2 foot increments from 4' to 18'

ATTACHED TOOL

is a 9/16 wrench

