

# OPERATOR'S SAFETY AND SERVICE MANUAL

---



## ROAD SAW



## CS500

---

### **MBW Europe Ltd.**

Units 2&3 Cochrane Street  
Bolton BL3 6BN  
England, UK  
Phone: 44 (0)1204 387784  
Fax: 44 (0)1204 387797  
E-mail: [saleseurope@mbw.com](mailto:saleseurope@mbw.com)  
Website: [www.mbweurope.com](http://www.mbweurope.com)

Use this guide along with the parts lists attached to locate and identify components of your saw. When ordering replacement parts, be sure to provide the model number and serial number from the saw.

## Contact

MBW EUROPE LTD  
UNITS 2-3  
COCHRANE STREET  
BOLTON  
BL3 6BN

[www.mbweurope.com](http://www.mbweurope.com)

# Foreword

## **Quality assurance / machine break in**

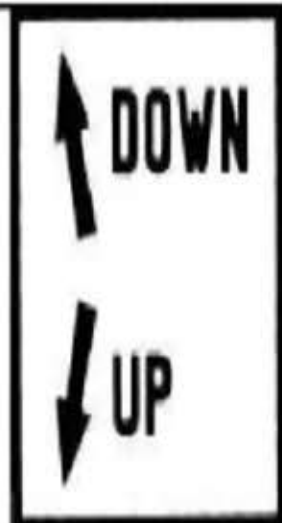
The machine is the product of extensive engineering development designed to give long life and unmatched performance. The trowels are shipped fully assembled, and only require filling with fuel and a brief check of lubricant levels in preparation for operation.

You can help ensure that your trowel will perform at top levels by observing a simple routine on first use. Consider that your new trowel is like a new car. Just as you would break in a new car to the road or any new machine to the job, you should start gradually and build up to full use. Learn what your machine can do and how it will respond. Refer to the engine manufacturer's manual for run-in times. Full throttle and control may be used after this time period, as allowed by material. This will serve to further break in the machine on your specific application, as well as provide you with additional practice using the machine.

We thank you for the confidence you have placed in us by purchasing an MBW machine and wish you many years of satisfied use.

# OPERATING INSTRUCTIONS

<b>1</b>	<b><u>Basic Safety Instructions</u></b>	<b>6</b>
1.1	<i>Symbols</i>	6
1.2	<i>Machine plate</i>	7
1.3	<i>Safety instructions for particular operating phases</i>	7
<b>2</b>	<b><u>General description of the CS1</u></b>	<b>8</b>
2.1	<i>Short description</i>	8
2.2	<i>Layout</i>	8
2.3	<i>Technical data</i>	9
<b>3</b>	<b><u>Assembly and commissioning</u></b>	<b>10</b>
3.1	<i>Tool assembly</i>	10
3.2	<i>Water cooling system</i>	10
3.3	<i>Starting the machine</i>	11
<b>4</b>	<b><u>Transport and Storing</u></b>	<b>12</b>
4.1	<i>Securing for transport</i>	12
4.2	<i>Transport procedure</i>	12
4.3	<i>Long period of inactivity</i>	12
<b>5</b>	<b><u>Operating the CS1</u></b>	<b>13</b>
5.1	<i>Site of work</i>	13
5.2	<i>Cutting method</i>	13
<b>6</b>	<b><u>Maintenance and service</u></b>	<b>14</b>
6.1	<i>Maintenance of the machine</i>	14
6.2	<i>Maintenance of the engine</i>	15
<b>7</b>	<b><u>Faults: causes and cures</u></b>	<b>18</b>
7.1	<i>Fault-finding procedures</i>	18
7.2	<i>Trouble-shooting guide</i>	18
7.3	<i>Customer service</i>	18



Rotation direction of the blade



Never move the machine with the blade running idle.



Emergency Stop



Rotation direction of the blade



Danger: risk of cut

## 2 General description of the CS500

Any modification, which could lead to a change in the original characteristics of the machine, may be done only by MBW. who shall confirm that the machine is still in conformity with the safety regulations. MBW keeps the right of making technical or design modification without prior notification.

### 2.1 Short description

The **Floor Saw CS500** you have chosen, is used for small repair works in concrete and asphalt, for cutting induction loops and installing cables as well as for cutting expansion joints. It can be used for either wet or dry cutting operations. Being of small construction, it can be transported in a car or van. The water container is enclosed in the frame. All component parts on the CS500 are assembled to a high quality standard, ensuring long life, reliability and a minimum of maintenance. Special types of blades are available for asphalt, green concrete, cured concrete (reinforced or not) as well as for industrial cement flooring.

Made of jig welded open profile steel, the CS500 is stable but at the same time, easily transportable.

The one-piece blade guard fully protects the operator and his working environment. It is firmly fixed to the main frame but can be opened by rotation to change blades.

A manually operated hand wheel mechanism enables graduated depth setting. Turning the hand wheel clockwise or anti-clockwise will lower or raise the cutting blade.

The pivoting frame , hinged on the rear axle, is supporting the engine, the blade shaft assembly, and the protecting guards. Four heavy-duty belts drive the blade.

The precisely manufactured blade shaft is fitted into two heavy-duty self-aligning pillow block bearings, including grease nipples. A four-belt taper lock pulley is fitted on one end. The shaft is reduced to 25,4mm at the other end, allowing an inner flange complete with dowel pinholes to be fixed.

The steel belt guard is bolted to the mainframe of the machine. It is covering the four drive belts and pulleys for protection of the environment while the machine is running. The pointer allows the operator to make precise cut easily.

The Honda GX390 engine is connected to an emergency shut down switch on the board of the machine. This allows an immediate stop of the machine in case of danger. The water cooling system is composed of a 70 litres water tank, a water tank tap and two water nozzles on the blade guard ensuring adequate flow of water to both sides of the blade.

## 2.3 Technical data

Engine	Honda GX390, 4 strokes, 1 cylinder, 13HP (9,6kW)
Fuel	Automotive unleaded gasoline
Oil	Honda 4-Stroke, or equivalent high detergent, premium quality motor oil certified to meet or exceed U.S. automobile manufacturer's requirement for service classification SG, SF. (SG, SF designated on the oil container). SAE 10W-30 recommended
Starter	Manual pull chord
Air filter	Dual type (machine type 99277, 99556, 99557, and 99558) Cyclone type (machine type 99939)
Max. blade diameter	500 mm
Bore	25,4 mm
Max. cutting depth mm	190 mm
Flange diameter	115 mm
Blade shaft speed	2600 min <sup>-1</sup>
Driving belts	4
Water tank	70 l
Machine dimensions (length x width x height)	1088x580x925mm
Weight	140 kg
Max. operating weight	220 kg
Sound pressure level	89 dB (A) following ISO EN 11201
Sound energy level	105 dB (A) following ISO EN 3744

## **3 Assembly and commissioning**

Before beginning the work with the CS500, you have to assemble some parts.

### **3.1 Tool assembly**

Only use professional blades with the CS500.

A blade with a maximum diameter of 500 mm can be fitted. All tools used must be selected with regard to their maximum permitted cutting speed for the machine's maximum permitted rotation speed.

Before mounting a new blade, switch the machine off.

To mount a new blade, follow these steps:

Turn the wheel until the cutting head is in the raised position.

Loosen the screw maintaining the blade guard with the 19mm wrench, and turn it open.

Loosen the hexagonal nut, which holds the removable outer flange with the 36mm wrench.

Remove the outer flange.

Clean the flanges and blade shaft and inspect for wear.

Mount the blade on the shaft ensuring that direction of rotation is correct. Wrong direction of rotation blunts the blade quickly.

Replace outer blade flange.

Tighten hexagonal nut with spanner supplied for this purpose.

Close the blade guard.

The blade bore must correspond exactly to the blade shaft. Cracked or damaged bore is dangerous for the operator and for the machine.

### **3.2 Water cooling system**

Fill the water tank with clean water.

Open water-tap (note that handle on water-tap should be in line with water-flow).

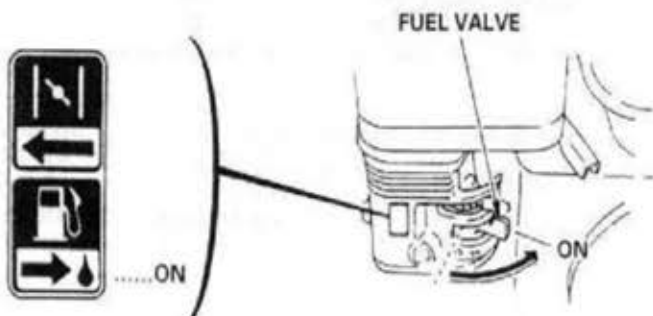
Ensure that water is flowing freely in the circuit and delivered adequately to both sides of the blade, as insufficient water supply may result in premature failure of the diamond blade.


In case of frost, empty the water cooling system

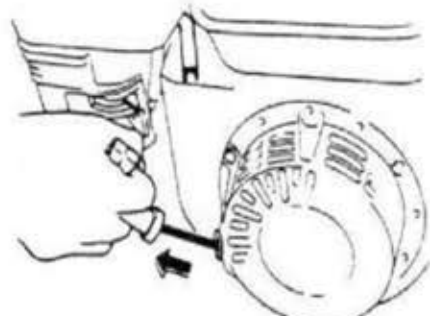


### 3.3 Starting the machine

Make sure the blade is raised clear up the ground before starting the machine.

 <p>FUEL VALVE</p> <p>ON</p>	
<p>Turn the fuel valve to the ON position.</p>	<p>Move the choke lever to the CLOSED position. NOTE: do not use the choke if the engine is warm or the air temperature is high.</p>

 <p>THROTTLE CONTROL LEVER</p> <p>HIGH</p> <p>LOW</p>	
<p>Move the throttle control lever slightly to the left.</p>	<p>Put the engine switch on ON, and make sure the emergency switch on the board of the machine is in the correct position.</p>

	
<p>Pull the starter grip lightly until you feel resistance, then pull briskly. CAUTION: Do not allow the starter grip to snap back against the engine. Return it gently to prevent damage to the starter.</p>	<p>As the engine warms up, gradually move the choke lever to the OPEN position. Position the throttle control lever for the maximum engine speed.</p>

To stop the engine, move the throttle control lever fully to the right, then turn the engine switch to the OFF position. Turn the fuel valve to the OFF position

## **4 Transport and Storing**

Take the following measures in order to transport and store the CS500 securely

### ***4.1 Securing for transport***

Before transporting the machine:

Remove the blade.

Empty the water tank.

Raise the guide-a-cut in its upright position.

Raise the cutting frame to its highest position using the handwheel.

### ***4.2 Transport procedure***

The machine can be moved on a flat surface using its wheels. Use the metal hook located on the board of the machine over the motor to move the machine with a crane.

### ***4.3 Long period of inactivity***

If the machine is not going to be used for a long period, please take the following measures:

Completely clean the machine.

Loosen the drive belts. Grease

the threaded shaft. Possibly

change the motor oil. Empty

the water system.

The storage site must be clean, dry and at a constant temperature

# 5 Operating the CS500

## 5.1 Site of work

Before you start working, please check the following points:

Remove from the site anything, which might hinder the working procedure.

Make sure the site is sufficiently well lit.

Make sure you have a continual adequate view of the working area so you can intervene in the working process at any time.

Keep other staff out of the area, so you can work securely.

## 5.2 Cutting method

### 5.2.1 Preparing your cut

Before starting the machine,

Draw a line on the floor over the cutting length.

Make sure you have filled the engine tank with fuel, and the water tank with water. No petrol is supplied with the machine.

The engine is shipped with oil. Check oil level before starting. Top up if required.

Make sure you have mounted the correct blade as recommended by the manufacturer depending on the material to be worked, the working procedure (dry or wet cut) to be carried out, and the efficiency required.

Make sure that the flanges securely hold the diamond blade.

Make sure that the blade is not touching the floor before starting.

Roll the machine until the blade is over the line.

Lower the guide-a-cut so it touches the line.

### 5.2.2 Cutting the floor

You can now start the engine.

To make your cut,

Turn the depth hand wheel until the blade slightly touches the floor.

Open water valve to control the amount of water required for the type of blade, using 15 to 25l/min for wet and 1-2l/min for dry cutting, dust control. Check for minimum water level regularly.

turn the hand wheel to lower blade into the cut.

Once the required depth of cut is reached, push the machine forward with steady and gentle pressure and follow the line with the pointer. The feed speed must be adjusted depending on the material being cut, and depth of cut.

At the finish of the cut, raise the blade out of the cut by turning the hand wheel, switch off the engine and shut-off the water

## 6 Maintenance and service

**ATTENTION** : to perform maintenance on the machine, always switch it off. Always wear a face mask and safety goggles while performing the maintenance of machine

### 6.1 Maintenance of the machine

To ensure a long-term quality from the cutting with the CS500, please follow the maintenance plan below:

		After one hour of work Begin of the day	During the changing of the tool	End of the day	Every week	After a fault	After a damage
Whole machine	Visual control (general aspect, watertightness)						
	Clean						
Flange and blade fixing devices	Clean						
Belts tension	Control						
Water hoses and nozzles	Clean						
Depth screw	Grease						
Engine housing	Clean						
Reachable nuts and screws	Tighten up						

belts

### Adjustment and replacement of the

After one hour of work, the belts heat and stretch. Therefore, you have to re-tension them.

To adjust the belts, firstly remove the belt guard by unscrewing the 2 nuts. Loose the 2 bolts at the back of the engine-plate and shift the engine by using the screw on the back of the plate to retighten the belts.

To replace the belts, move the engine completely down by unscrewing the screw at the back of the engine-plate. Adjust the belts and retighten them using the screw at the back of the engine plate.

Always use a matched set of belts. Do not replace single belts. After controlling or retightening

the belts, reassemble the belt guard on the frame of the machine.

### Lubrication

The CS500 uses life-lubricated bearings. Therefore, you don't need to lubricate them at all. Grease the depth screw every day.

## Cleaning of the machine

Your machine will last longer if you clean it thoroughly after each day of work

### 6.2 Maintenance of the engine

		Each use	First month or 20 hours	Every 3 months or 50 hours	Every 6 months or 100 hours
	Check level	—	—	—	—
Engine oil	Change	■			
	Check		■		■
Air cleaner filter	Clean	■			
Fuel strainer cup	Clean			■	
Spark plug	Check-Clean				■
Fuel line	Check (Replace if necessary)		Every 2 years		■

#### Engine oil

To change the oil,

Remove the oil filler cap/dipstick and drain bolt.

Allow the oil to drain completely.

Dispose of used motor oil in a manner that is compatible with the environment. We suggest you to take used oil in a sealed container to your local recycling centre or service station for reclamation. Do not throw it in the trash, pour it on the ground or down in a drain.

Reinstall the drain bolt, and tighten it to 18 N.m.

Fill the crankcase with the engine oil to the outer edge of the oil filler neck.

Reinstall the filler cap/dipstick.



## Air cleaner

The CS500 has a dual type filter.  
To service the air cleaner filter, follow these instructions:

Remove the nut, air cleaner cover and wing nut.

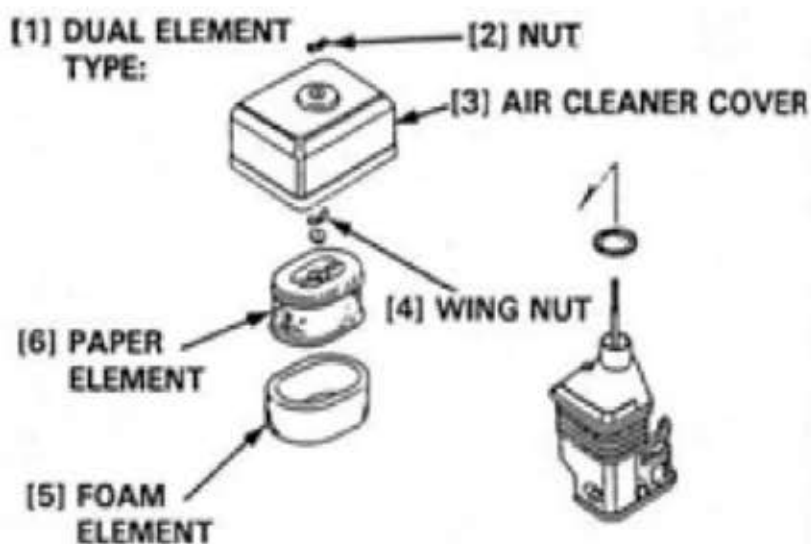
Remove the pre air cleaner elements and separate them.

Carefully check both elements for holes or tears and replace if damaged.

**Paper element:** tap element lightly several times on a hard surface to remove excess dirt or blow compressed air lightly through the filter from the inside out. Never brush the dirt off; brushing will force dirt into the fibres.

**Foam element:** clean in warm soapy water, rinse and allow to dry thoroughly. Dip the element in clean engine oil and squeeze out all the excess. The engine will smoke during initial start-up if too much oil is left in the foam.

Shine a light through the elements, and inspect them carefully. Reinstall the elements if they are free of holes and tears.



## Fuel strainer cup

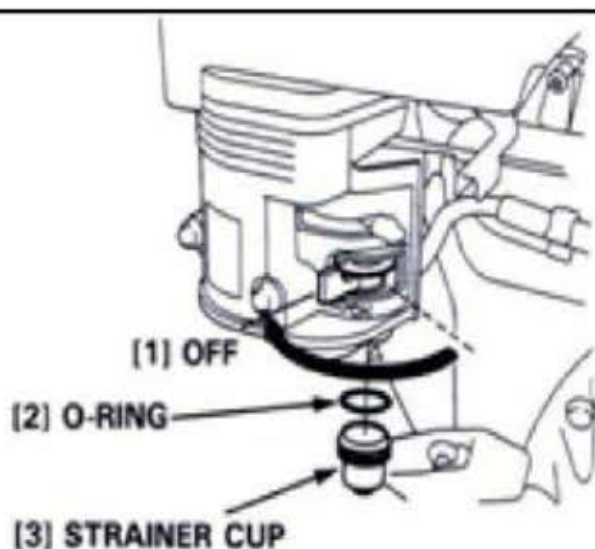
To service fuel strainer cup, follow these instructions:

Turn off the fuel valve and remove the strainer cup.

Clean the strainer cup with solvent

Install the O-ring and strainer cup.

Tighten the strainer cup to 4N.m.



## Spark plug

To service the spark plug, follow these instructions:

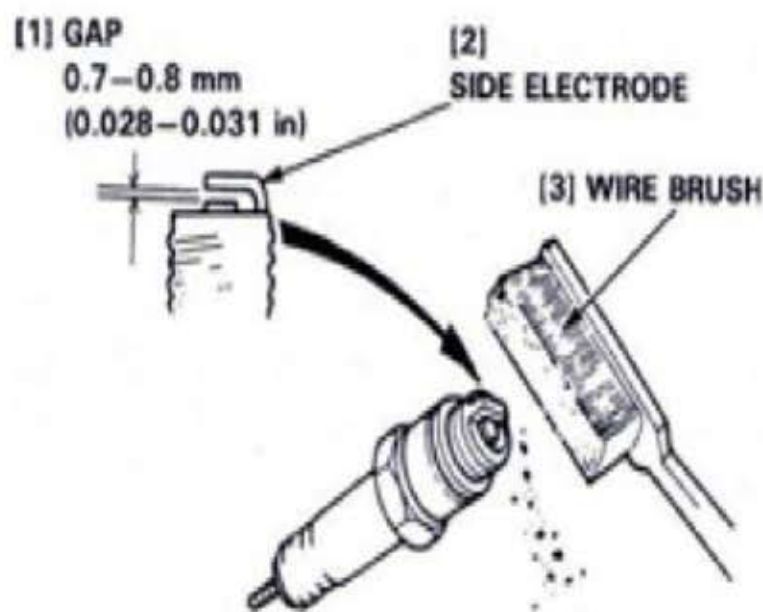
Visually inspect the spark plug. Discard the plug if the insulator is cracked or chipped.

Remove carbon or other deposits with a stiff wire brush.

Measure the plug gap with a wire-type feeler gauge. If necessary, adjust the gap by bending the side electrode.

Make sure the sealing washer is in good condition; replace the plug if necessary.

Install the plug fingertight to seat the washer, then tighten with a plug wrench (an additional  $\frac{1}{2}$  turn if a new plug) to compress the sealing washer. If you are reusing a plug, tighten  $\frac{1}{8}$ - $\frac{1}{4}$  turn after the plug seats.



## Fuel line

To service the fuel line, follow these instructions:

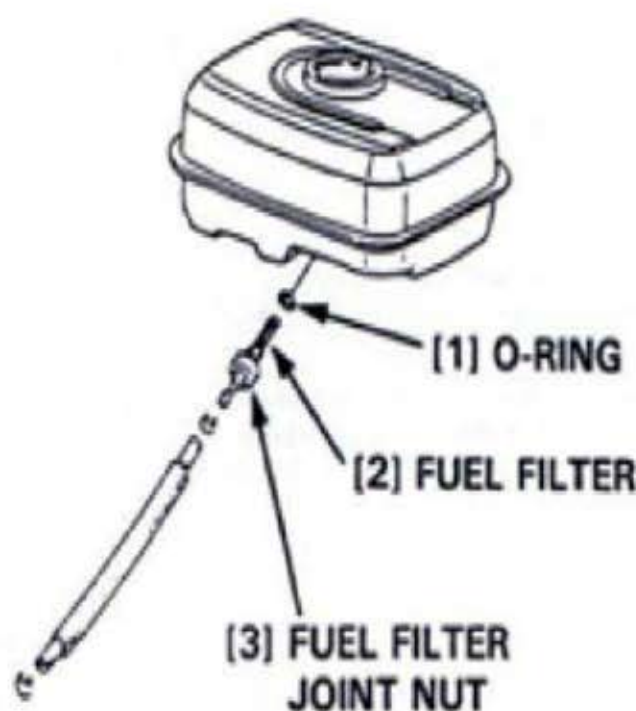
Drain the fuel into a suitable container, and remove the fuel tank.

Disconnect the fuel line, and unscrew the fuel filter from the tank.

Clean the filter with solvent, and check, that the filter screen is undamaged.

Place the O-ring on the filter and reinstall. Tighten the filter to 2N.m.

After reassembly, check for fuel leaks.



## Further maintenance

For further maintenance, please contact the nearest engine maintenance centre.

## 7 Faults: causes and cures

### 7.1 Fault-finding procedures

Should any fault occur during the use of the machine, turn it off. Let only qualified staff make any intervention other than the one described in the previous section.

### 7.2 Trouble-shooting guide

Trouble	Possible source	Resolution
Hard starting	Not enough fuel	Fill fuel tank
	Fuel filter clogged	Clean fuel filter
	Spark plug faulty	Inspect spark plug
	Stronger fault	Contact nearest engine maintenance centre
Engine lacks power	Air filter restricted	Clean or replace air filter
	Stronger fault	Contact nearest engine maintenance centre

### 7.3 Customer service

When ordering spare parts, please mention:

The serial number (7 digits).

The code of the part.

The exact denomination.

The number of parts required.

The delivery address.

Please indicate clearly the means of transportation required such as "express" or "by air". Without specific instructions, we will forward the parts through the means which seem appropriate to us and but which is not always the quickest way.

Clear instructions will avoid problems and faulty deliveries.

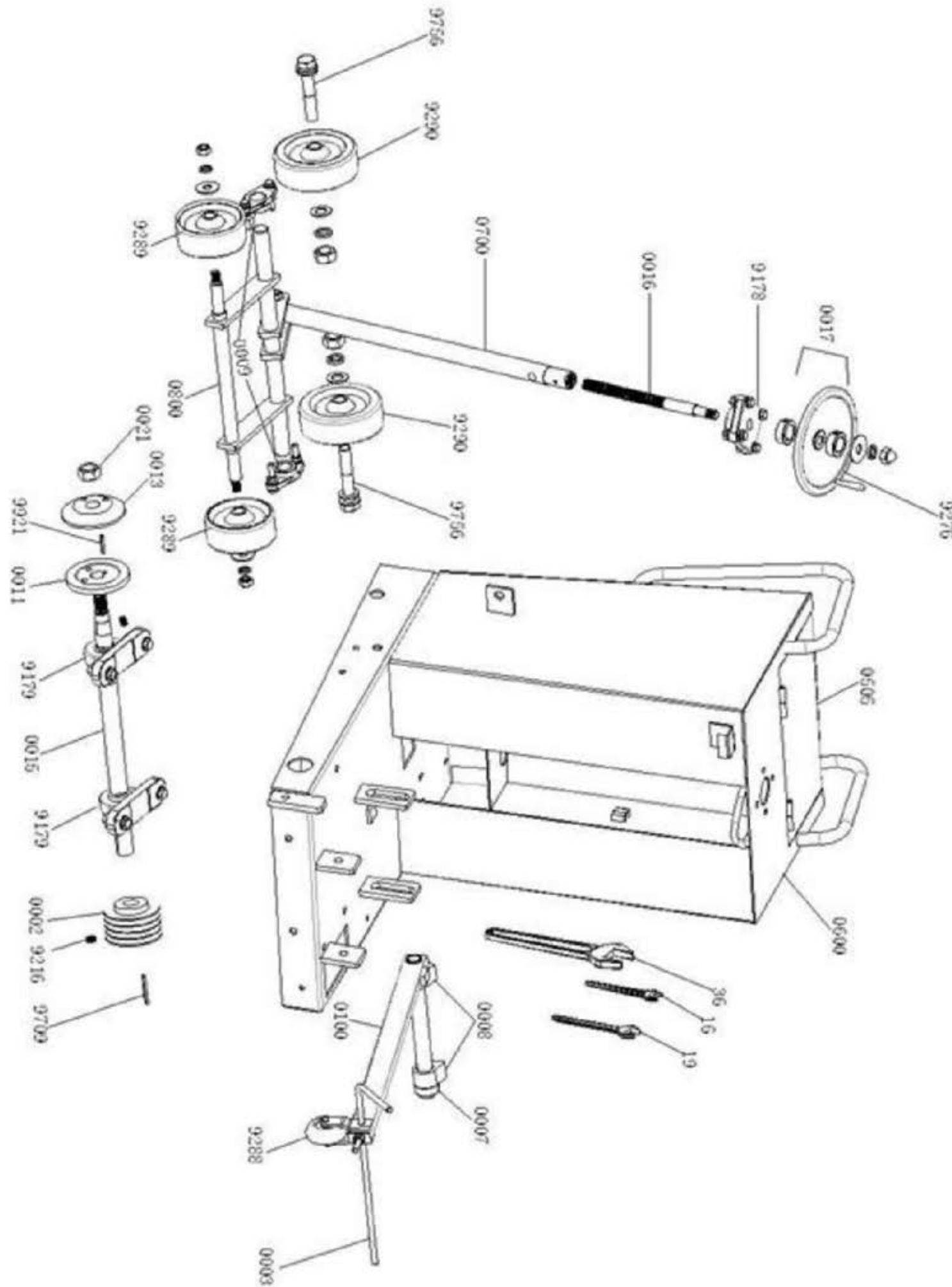
If not sure, please send us the defective part.

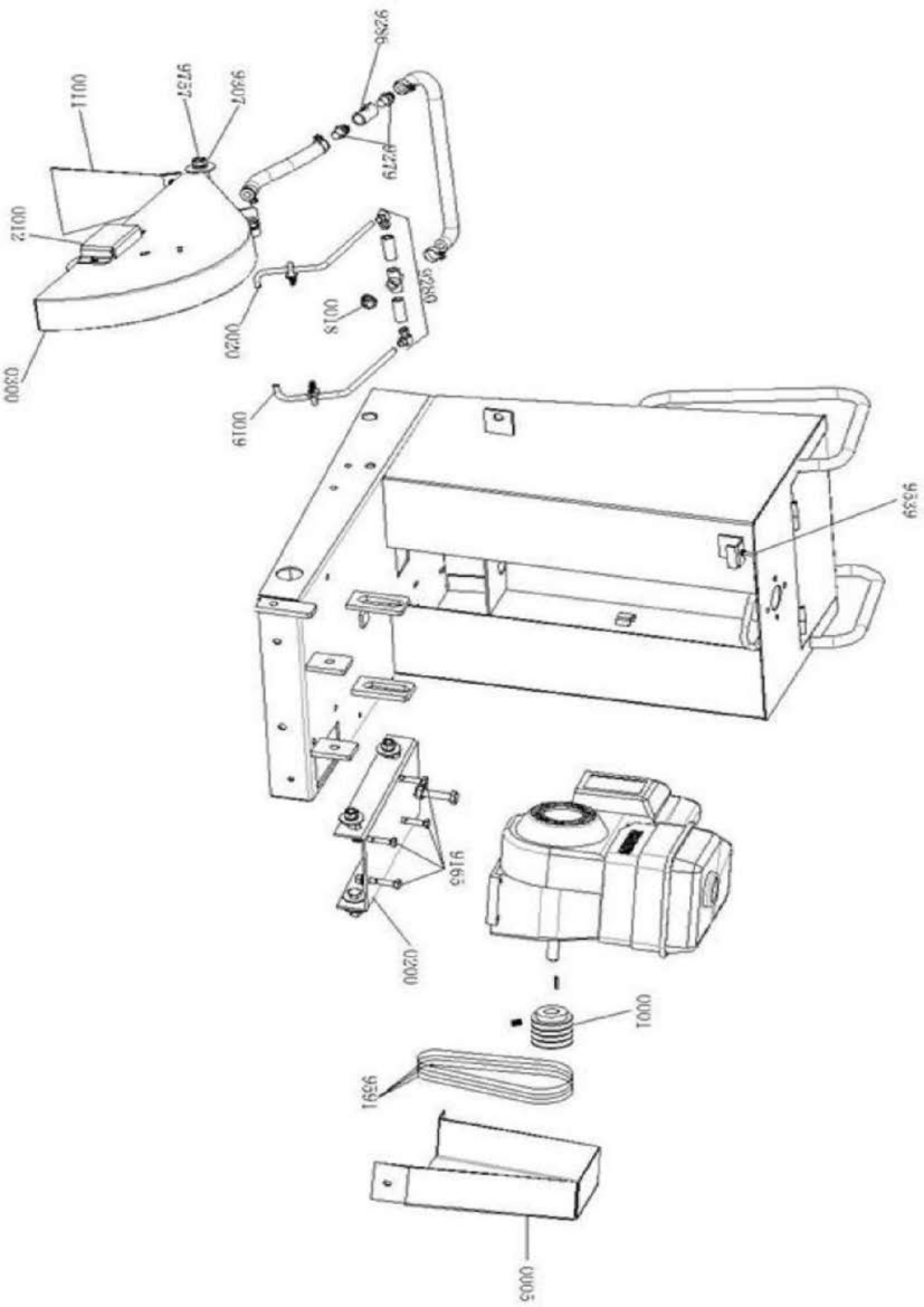
In the case of a warranty is claim, the part must always be returned for evaluation.

Spare parts for the engine can be ordered with the manufacturer of the engine or with their dealer, which is often quicker and cheaper.



# 8. PARTS





<b>NO.</b>	<b>PART NO.</b>	<b>DESCRIPTION</b>
1	0600	Chassis
2	0505	Water Tank Lid
3	0300	Blade Guard
4	9307	Blade guard Nut M16
5	0011	Splash Guard
6	0019/0020	Water Nozzles
7	0018	Union R
8	9280	Water Distribution Assy Blade Guard
9	9279	Hose Union
10	9286	Union Male
11	0017	Handwheel with Hand Grip
12	9276	Hand Grip for Handwheel
13	9478	Bearing Drive Shaft
14	0016	Height Adjuster internal shaft
15	0700	Height Adjuster main shaft
16	0009	Rear Axle Bearing (Set of 2)
17	0800	Front Axle
18	9289	Front Wheel
19	9290	Rear Wheel
20	9756	Retainer bolt Rear Wheel
21	9921	Dowel Pin, blade location
22	0013	Outer Blade retaining flange
23	0014	Inner Blade retaining flange
24	0015	Blade Shaft
25	9216	Grub screw
26	9479	Pulley block bearing
27	9709	Key Rear Axle
28	0002	Pulley for Blade Shaft
29	0008	Front Pointer Bearing (Set of 2)
30	0007	Spacer
31	0012	Shaft End Cover
32	0005	Belt Guard
33	9591	V Belt (Set of 4)
34	0001	Engine Pulley
35	9288	Wheel, cutter guide
36	0003	Pointer Guide
37	0100	Pointer Guide Assy
38	36	Flat Wrench 36mm

39	0200	Engine Deck	25.5
40	9539	Engine Stop Switch (Petrol)	1.1
41	19	Flat Wrench 19mm	3.43
42	16	Flat Wrench 16mm	1.71

# WARRANTY

**WHAT DOES THIS WARRANTY COVER?** MBW INC warrants each New Machine against defects in material and workmanship for a period of twelve (12) months. "New Machine" means a machine shipped directly from MBW or authorized MBW dealer to the end user. This warranty commences on the first day the machine is sold, assigned to a rental fleet, or otherwise put to first use.

MBW warrants each Demonstration Machine against defects in material and workmanship for a period of six (6) months. "Demonstration Machine" means a machine used by MBW or its agents for promotional purposes. This warranty commences on the first day the machine is sold, assigned to a rental fleet, or otherwise put to first use.

This warranty covers the labor cost for replacement or repair of parts, components, or equipment on New Machines or Demonstration Machines, and MBW shall pay labor costs at MBW's prevailing rate to affect the warranted repair or replacement. MBW reserves the right to adjust labor claims on a claim-by-claim basis.

This warranty covers the shipping cost of replacement parts, components, or equipment via common ground carriers from MBW to an authorized MBW dealer. Air freight is considered only in cases where ground transportation is not practical.

**MAY THIS WARRANTY BE TRANSFERRED?** This warranty is non-transferable and only applies to the original end user of a new machine or demonstration machine.

## WHAT DOES THIS WARRANTY NOT COVER?

1. This warranty does not cover any Used Equipment. "Used Equipment" means any MBW machine or equipment that is not a New Machine or a Demonstration Machine. All Used Equipment is sold **AS IS/WHERE IS WITH ALL FAULTS**.

2. This warranty does not cover any New Machine, Demonstration Machine, or their equipment, parts, or components altered or modified in any way without MBW's prior written consent. This warranty does not cover the use of parts not specifically approved by MBW for use on MBW products. This warranty does not cover misuse, neglect, shipping damage, accidents, acts of God, the operation of any New Machine or Demonstration Machine in any way other than recommended by MBW in accordance with its specifications, or any other circumstances beyond MBW's control. This warranty does not cover any New Machine or Demonstration Machine repaired by anyone other than MBW factory branches or authorized MBW distributors.

3. This warranty does not cover, and MBW affirmatively disclaims, liability for any damage or injury resulting directly or indirectly from design, materials, or operation of a New Machine or Demonstration Machine or any other MBW product. MBW's liability with respect to any breach of warranty shall be limited to the provisions of this document and in no event shall exceed an amount equal to the purchase price of the New Machine or Demonstration Machine purchased from MBW.

4. This warranty does not cover engines, motors, and other assemblies or components produced by other manufacturers and used on a New Machine or Demonstration Machine, as said engines, motors, and other assemblies or components may have warranties provided by the manufacturer thereof. This warranty does not apply to consumable items, such as v-belts, filters, trowel and screed blades, seals, shock mounts, batteries, and the like, all of which are sold **AS IS/WHERE IS WITH ALL FAULTS**.

5. This warranty does not cover the cost of transportation and other expenses which may be connected with warranty service but not specifically mentioned herein.

6. This warranty does not cover any updates to any New Machine, Demonstration Machine, or any other MBW product. MBW reserves the right to improve or make product changes without incurring any obligation to update, refit, or install the same on New Machines or Demonstration Machines previously sold.

**WHAT MUST YOU DO TO OBTAIN WARRANTY COVERAGE?** Each New Machine or Demonstration Machine is accompanied by a Warranty Registration Card. You must sign, date, and return the Warranty Registration Card to the place of origin of the New Machine or Demonstration Machine, either to MBW, Inc. at P.O. Box 440, Slinger, Wisconsin 53086 or MBW Europe Ltd. at Units 2 & 3 Cochrane Street, Bolton BL3 6BN, United Kingdom, within ten (10) days after purchase, assignment to a rental fleet, or first use. This signed warranty card is the buyer's affirmation that he has read, understood, and accepted the warranty at the time of purchase. Failure to return the warranty card as specified herein renders the warranty null and void. In order to receive warranty coverage consideration, warranty claims must be submitted within thirty (30) days after the New Machine or Demonstration Machine fails. Warranty claims must be submitted to MBW, Inc. or MBW Europe Ltd and written authorization for the return of merchandise or parts under the warranty must be obtained before shipment to MBW.

**WHAT WILL MBW DO?** MBW's obligation under this warranty is limited to the replacement or repair of parts for a New Machine or Demonstration Machine at MBW factory branches or at authorized MBW distributors, and such replacement or repair is the exclusive remedy provided hereunder. Labor must be performed at an authorized MBW distributor. MBW reserves the right to inspect and render a final decision on each warranty case, and MBW's repair or replacement is solely within the discretion of MBW.

**IT IS EXPRESSLY AGREED THAT THIS SHALL BE THE SOLE AND EXCLUSIVE REMEDY UNDER THIS WARRANTY. UNDER NO CIRCUMSTANCES SHALL MBW BE LIABLE FOR ANY COSTS, LOSS, EXPENSE, DAMAGES, SPECIAL DAMAGES, INCIDENTAL DAMAGES, OR PUNITIVE DAMAGES ARISING DIRECTLY OR INDIRECTLY FROM THE USE OF THE NEW MACHINE OR DEMONSTRATION MACHINE WHETHER BASED UPON WARRANTY, CONTRACT, NEGLIGENCE, STRICT LIABILITY, OR ANY OTHER LEGAL THEORY.**

**THE FOREGOING WARRANTY IS EXPRESSLY IN LIEU OF ALL OTHER WARRANTIES, EXPRESS OR IMPLIED, INCLUDING THE WARRANTIES OF MERCHANTABILITY, FITNESS FOR USE, AND FITNESS FOR A PARTICULAR PURPOSE, AND ALL OTHER OBLIGATIONS OR LIABILITY ON MBW'S PART. MBW NEITHER ASSUMES NOR AUTHORIZES ANY OTHER PERSON TO ASSUME ON BEHALF OF MBW ANY OTHER LIABILITY OR WARRANTY IN CONNECTION WITH THE SALE OR SERVICE OF ANY NEW MACHINE, DEMONSTRATION MACHINE, OR ANY OTHER MBW PRODUCT.**

## EXTENDED RAMMER WARRANTY - MODEL R222

This extended warranty commences on the last day of MBW's standard, one year, "limited warranty" and runs for an additional four years (48 months). This extended warranty is limited to part replacement and shipping costs of Rammer **bellows and non-metallic slide bearings only**. This extended warranty does not cover labor, down time, or any other cost beyond that of component replacement and freight. This extended warranty is subject to all limitations set forth in MBW's "limited warranty", above.



# M-B-W EUROPE LTD

Units 2 & 3 Cochrane Street, Bolton BL3 6BN

Tel: 01204 387784 Fax: 01204 387797

email: mbweurope@mbw.com > www.mbweurope.com

## EC Declaration Of Conformity

We : **MBW Europe Limited**

Of : **Units 2 & 3 Cochrane Street, Bolton BL3 6BN United Kingdom**

Hereby declare under sole responsibility that :

Product : **MBW Floor Saw**  
Model : **CS500**  
Serial number(s) : **1912000 & Onwards**

Is in conformity with the applicable requirements of the following harmonized standards

**EN 349.2008:A1:2008 EN 12100:2010 EN12649:2008+A1:2011 EN ISO 5349-2:2001 +A1:2015**

**2006/42/EC Machinery Directive**  
**2000/14/EC Noise Directive**  
**2001/95/EC General Product Safety Directive**  
**2002/95/EC Reduction of Hazardous Waste Directive**  
**LVD2014/35/EU Low Voltage Directive**  
**2004/30/EU Electromagnetic Compatibility**

The undersigned declares, on behalf of MBW Europe Limited that the equipment named above has been designed to comply with the relevant sections of the above referenced specifications.

The unit complies with all the applicable essential Health and Safety Requirements of the directive.

Name : **Greig Sandiford**

Position : **Managing Director**

Date : **01/01/2021**

Signature :

